

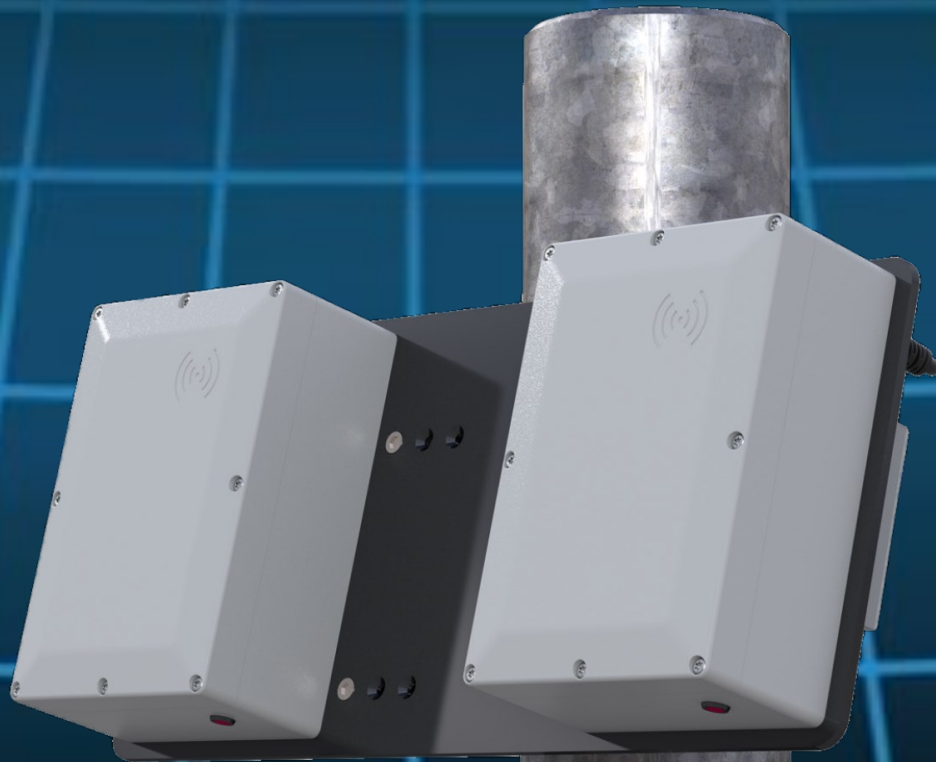
**TEMPLEFORCE**



**RECOMMENDED & ENDORSED PRODUCT**

**DOBERMANN DUAL**

**NET-WORKED COUNTER UAS  
JAMMER**



**120/121**



**SCAN ME**

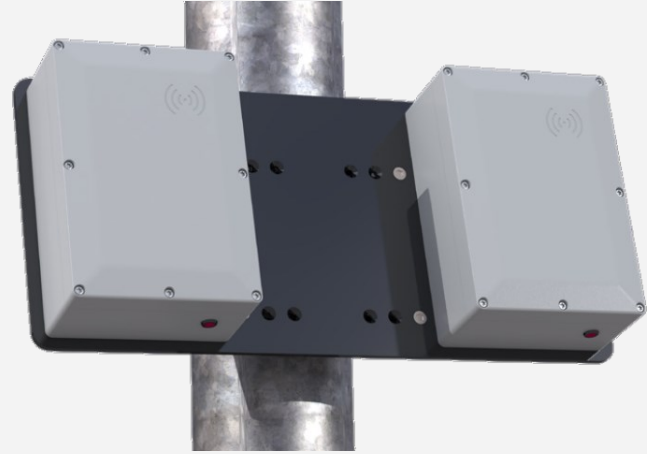
# DOBERMANN DUAL

DOBERMANN Dual is a **net-worked Counter UAS jammer** that can protect against drone threats by actively disrupting the control signal between the drone and its operator DOBERMANN Dual, however, is not your typical jammer and is packed with next-generation features that will make it stand out, including its scalability, jamming methods and autonomous mode.

The DOBERMANN Dual is designed to give Dual-band protection. With a collaborative jamming approach, the DOBERMANN Dual provides jamming on dual frequency bands, minimizing the risk of frequency hopping drones.

## Autonomous jamming

The DOBERMANN Counter UAS jammer can either function in manual mode, allowing the operator to decide when to actively engage a drone threat, or it may be instantly configured to autonomous mode, which allows the jammer to actively engage drones when detected. The DOBERMANN combined with the WATCHDOG or WOLFPACK drone detector, which will passively detect drones in the vicinity of the protected area, and once a drone is detected, the networked DOBERMANN will automatically start jamming the drone's control signal.



PARAMETER	SPECIFICATION
Weight	3,5 kg
Dimensions (DxWxH)	420 x 170 x 95 mm
Frequency bands	DM120 – 2.4 GHz, 5.2 GHz, 5.8 GHz DM121 – 2.4 GHz, 5.2 GHz, 5.8 GHz and 1.6 GHz (GNSS)
Coverage angle (Horizontal)	90°
Coverage angle (Vertical)	90°
IP rating	IP65
Power supply	2 x POE+ (Power over Ethernet)
Power consumption	50W
Operating temperature	-30 to 65
Color	Black/Gray

The Active Antenna (AA100) is an active omni-directional antenna for the WINGMAN and WATCHDOG series designed as wearable or for fixed mounting. The Active Antenna 100 is reliable, durable, low-weight and is dust- and waterproof with an IP67 rating.

The automatic quad-band antenna selection provides ease of use and optimal detection capability, allowing the RF sensor to expand its drone detection to cover the frequency bands used for drone controls, video and telemetry.

The Active Antenna has built-in filters and low noise amplifiers and is specifically designed for drone detection for utilizing WING- MAN or WATCHDOG as a sensor for end-users who require more frequency bands and an omni-directional extension to their drone detection capability.

**TEMPLEFORCE**



**DEFENCE & SECURITY  
CONSULTANTS**



SCAN ME



communications@templeforce.co.uk



www.templeforce.co.uk