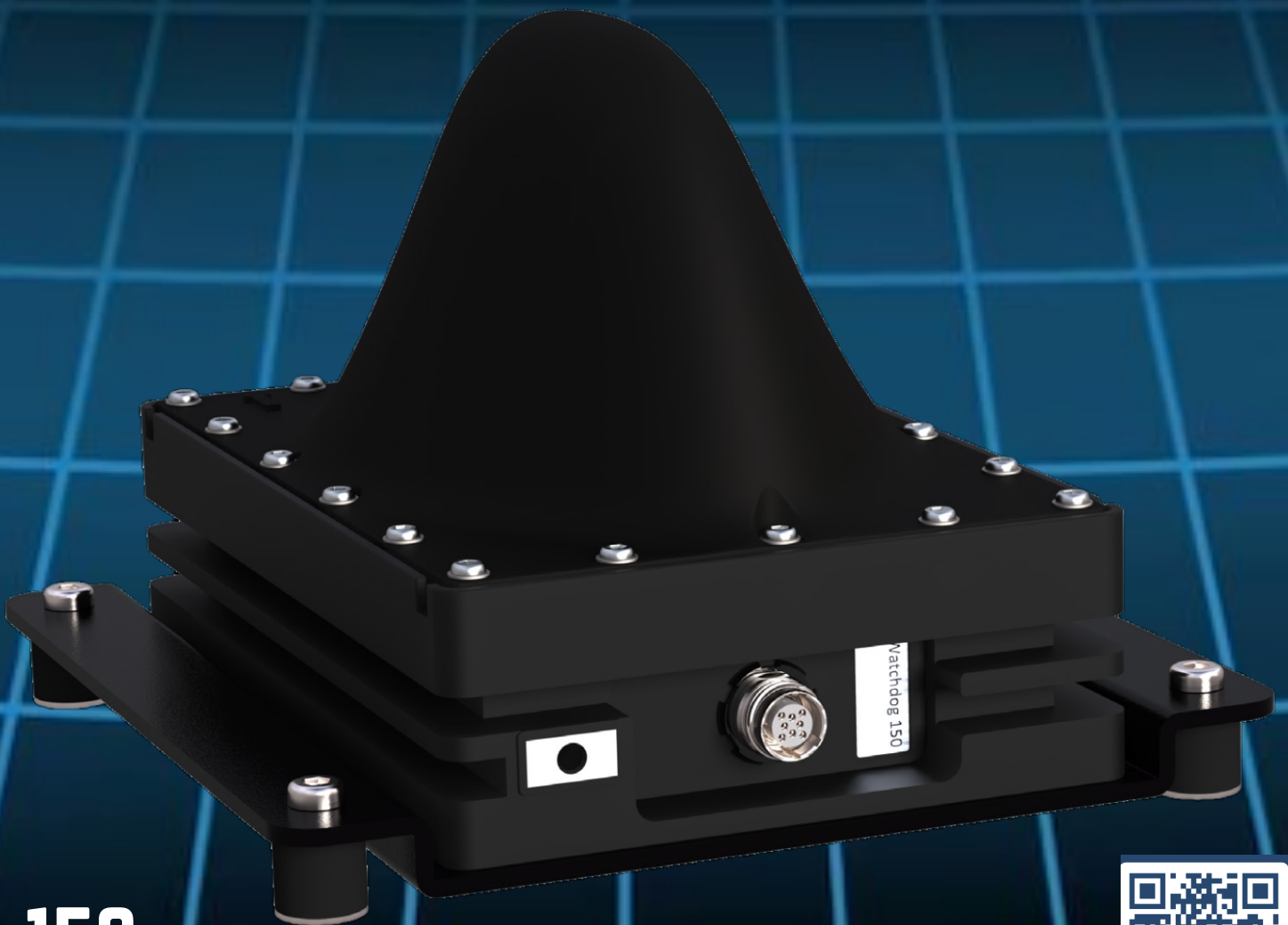


TEMPLEFORCE



RECOMMENDED & ENDORSED PRODUCT

**WIDE FREQUENCY
DRONE DETECTION AND LOCATION**



150



SCAN ME

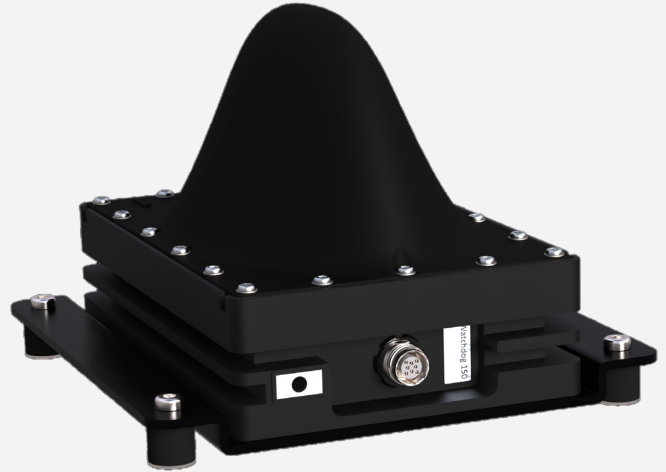
WATCHDOG 150

Watchdog 150 uses an omni-directional antenna and is typically mounted on top of a vehicle as a supplement to a set of WD250 sensors covering wider frequency bands.

Use two or more watchdogs for accurate drone location any time of day or night.

WATCHDOG 150 (WD150) is a ruggedized networked RF sensor capable of detecting control- and video signals from UAVs (drones) and controllers for a broad range of commercial and do-it-yourself (DIY) drones operating in the lower frequency bands. It provides alarms and information on drone protocol, and vendor when applicable.

The Watchdog WD150 is designed to withstand vibration and shock of military vehicles along with a range of harsh environmental conditions including dust, salt, and solar radiation. MIL-STD-810G qualification is currently ongoing.



PARAMETER	SPECIFICATION
Weight	1,9 kg
Dimensions (DxWxH)	180 x 180 x 158 mm
Detection range	Up to 3 km*
Detection time	Below 10 s
Frequency bands	433 MHz, 868 MHz, 915 MHz, 1.2 GHz (Omnidirectional)
Coverage angle (Horizontal)	360°
Accuracy of direction finding	No DF
IP rating	IP68
Power supply	Power Over Ethernet (PoE)
Power consumption	<15 W
Operating temperature	-30° to +65°C
Color	Black CARC-type paint

Watchdog WD150 employs enhanced electromagnetically shielding to avoid radio frequency emission and complies with MIL-STD-461F. WD150 has external grounding connection point for enhanced safety.

WD150 is powered by PoE and is fitted with a vibration dampening mount, which makes it easy to install. It can be operated from IRIS or integrated into existing C2 systems through ARGOS.

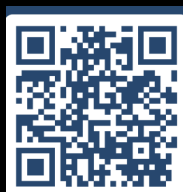
With our constant focus on reducing SWaP (Size, Weight and Power consumption), the WD150 is developed to be small, light, and power-efficient at a cost-effective price.

*Depending on RF environment & line of sight

TEMPLEFORCE



**DEFENCE & SECURITY
CONSULTANTS**



SCAN ME



communications@templeforce.co.uk



www.templeforce.co.uk