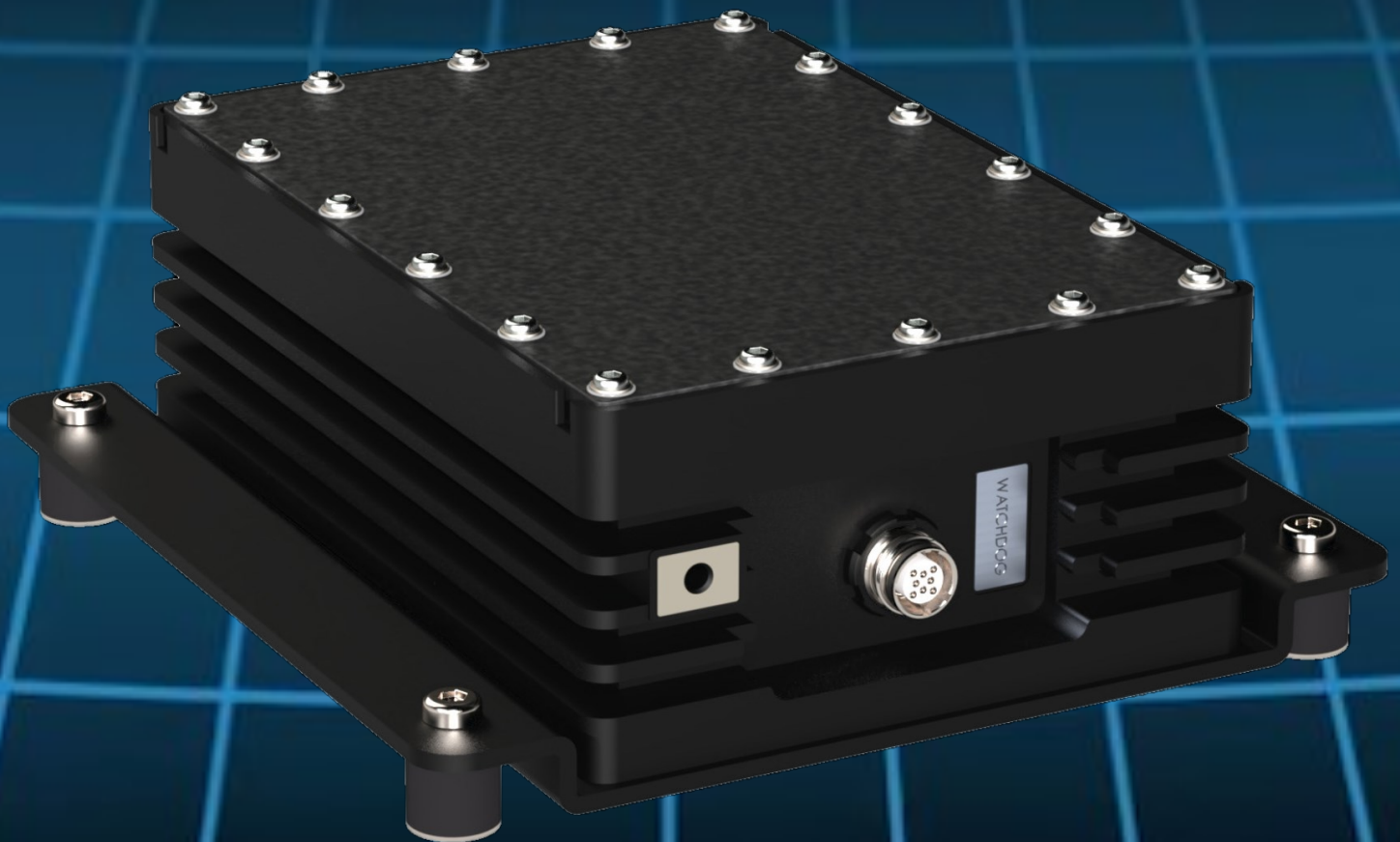


# TEMPLEFORCE



RECOMMENDED & ENDORSED PRODUCT

## RUGGEDIZED DRONELOCATER



250



SCAN ME

# WATCHDOG 250

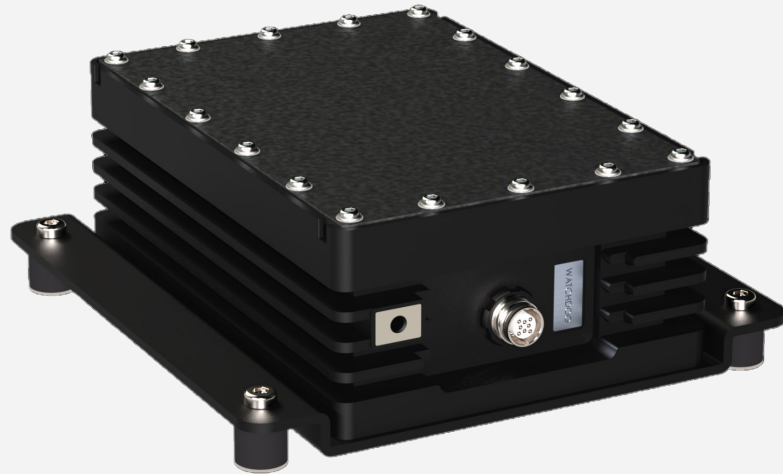
Watchdog 250 is a Ruggedized RF drone detection for networked installations. Capable of detecting RF signals from UAVs Drones and controllers.

Use two or more watchdogs for accurate drone location any time of day or night.

WATCHDOG 250 (WD250) is a ruggedized networked RF sensor capable of detecting control- and video signals from UAVs (drones) and controllers for a broad range of commercial and do-it-yourself (DIY) drones.

It provides alarms and information on protocol, and vendor when applicable.

When combining multiple sensors, the bearing information can be used to determine the dronelocation of the drone or controller. WD250 is functionally similar to Watchdog WD202 but ruggedized for use on military and civilian vehicles. The Watchdog WD250 is designed to withstand vibration and shock of military vehicles along with a range of harsh environmental conditions including dust, salt, and solar radiation. MIL-STD-810G qualification is currently ongoing.



PARAMETER	SPECIFICATION
Weight	1,9 Kg
Dimensions (DxWxH)	180 x 180 x 75 mm
Detection range	Up to 9 km *
Detection time	Below 10 s
Frequency bands	2,4 GHz, 5,2 GHz, 5,8 GHz *
Coverage angle (Horizontal)	90°
Coverage angle (Vertical)	90°
Accuracy of direction finding	5° RMS
IP rating	IP68
Power Supply	Power Over Ethernet (PoE)
Power consumption	< 15W
Operating temperature	-40° to +65°C
Color	Black CARC-type paint

Watchdog WD250 employs enhanced electromagnetic shielding to avoid radio frequency emission and complies with MIL-STD-461F. WD250 has external grounding connection point for enhanced safety.

WD250 is powered by PoE and is fitted with a vibration dampening mount, which makes it easy to install. It can be operated from Iris or integrated into existing C2 systems through Argos.

With our constant focus on reducing SWaP (Size, Weight and Power consumption), the WD250 is developed to be small, light, and power-efficient at a cost-effective price.

\* For extended frequency range:

Add a WD150 to cover also 433MHz, 868MHz, 915MHz and 1.2GHz

\*\* Depending on RF environment & line of sight

**TEMPLEFORCE**



**DEFENCE & SECURITY  
CONSULTANTS**



SCAN ME



[communications@templeforce.co.uk](mailto:communications@templeforce.co.uk)



[www.templeforce.co.uk](http://www.templeforce.co.uk)